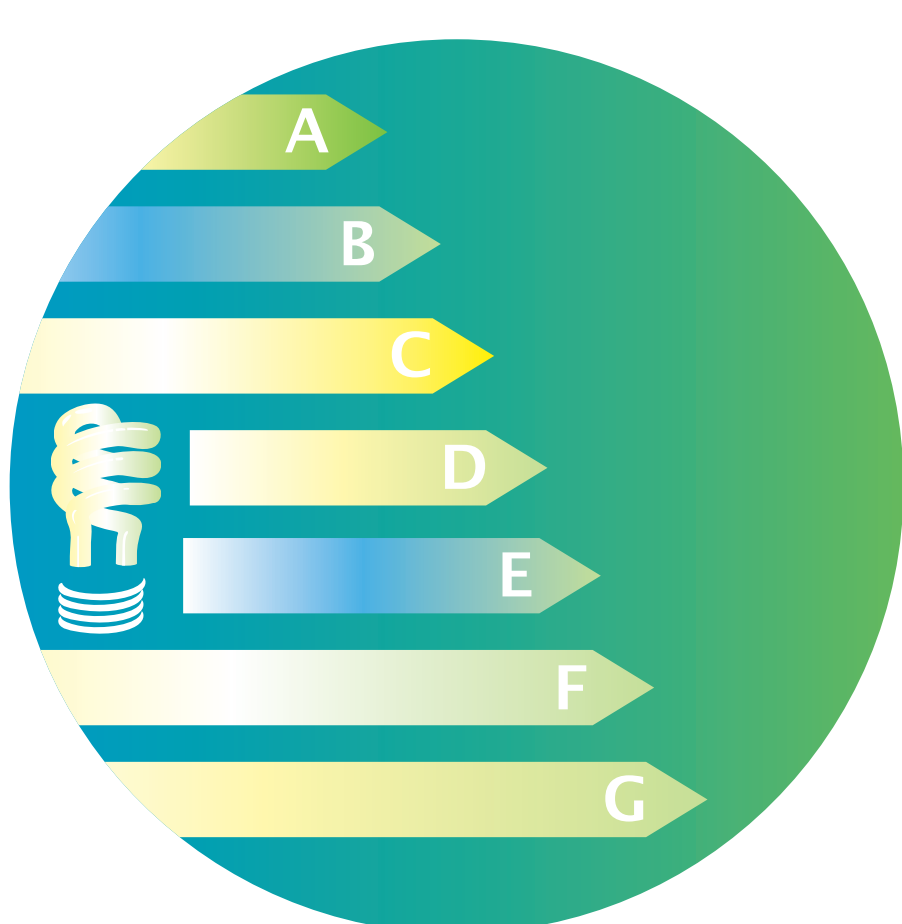
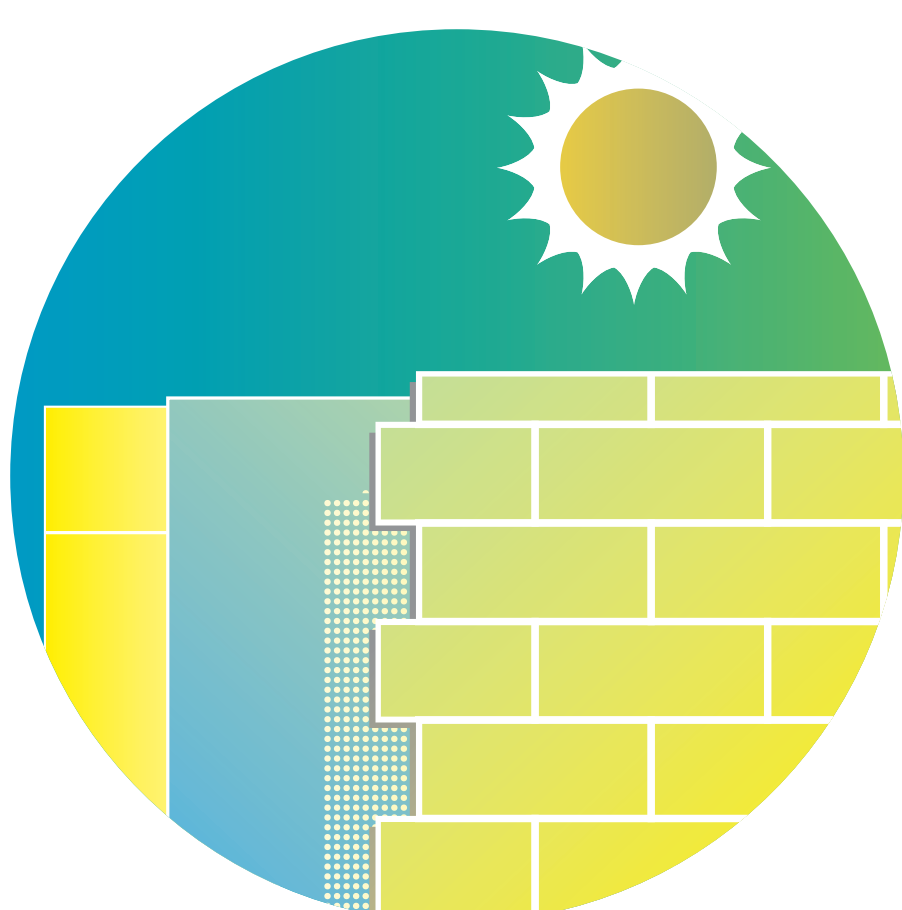




# Energy Efficiency in Low Income Housing in the Mediterranean



ELIH-Med is a Strategic Project co-financed under the MED Programme that will run from April 2011 to March 2014. The project focuses on the development of energy efficiency policies in Low Income Housing (LIH) in the Mediterranean area and the involvement of residents in the energy retrofit in order to help reach the EU2020 objectives



The main objective of the project is to identify and test, through large scale actions, the feasibility of cost efficient innovative technical solutions and financial mechanisms backed with ERDF (European Regional Development Fund) which could then be extended to all Mediterranean territories taking into account the differences of the region in comparison to the rest of Europe



## The expected main results of the project are:

- Development of strategies and policies that address energy efficiency in LIH
- Elaboration of an Operational Plan for a coordinated policy in the application of structural funds for energy efficiency in LIH
- Identification of financial and technical mechanisms adapted to LIH, to be deployed in the Mediterranean area
- Improve energy consumption habits and reduce energy bills thanks to smart metering



LEAD PARTNER (ITALY): ENEA – National Agency for New Technologies, Energy and Sustainable Economic CYPRUS: Cyprus Energy Agency FRANCE: Mediterranean Institute CSTB – Building scientific and technical centre Languedoc Roussillon Regional council GERES – Renewable energies, environment and solidarity group CRPM – Conference of peripheral maritime Regions 13 Habitat GREECE: CRES – Centre for Renewable Energy Sources and saving Region of East Macedonia and Thrace ITALY: ISNOVA – Institute for the Promotion of Technological Innovation Laore Sardegna Municipality of Frattamaggiore Municipality of Genoa MALTA: MIEMA – Malta Intelligent Energy management Agency SLOVENIA: US – Jozef Stefan Institute SPAIN: Málaga City Council Valencia Institute of Building Foundation



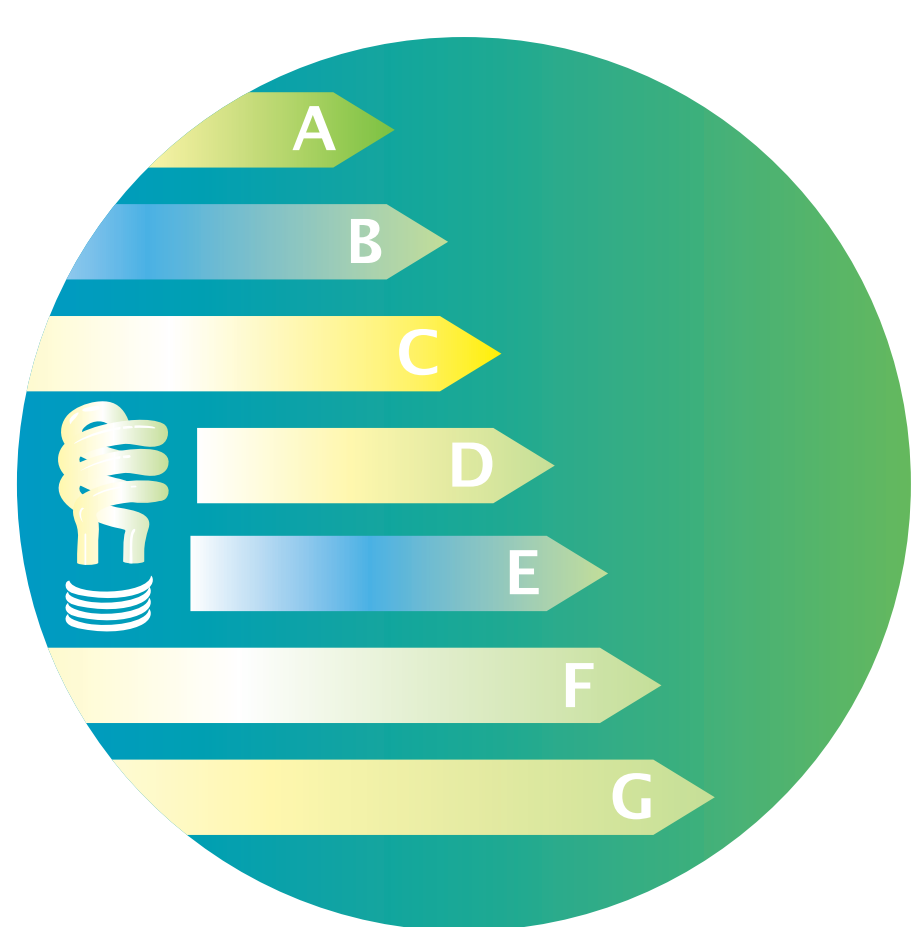
[www.elih-med.eu](http://www.elih-med.eu)



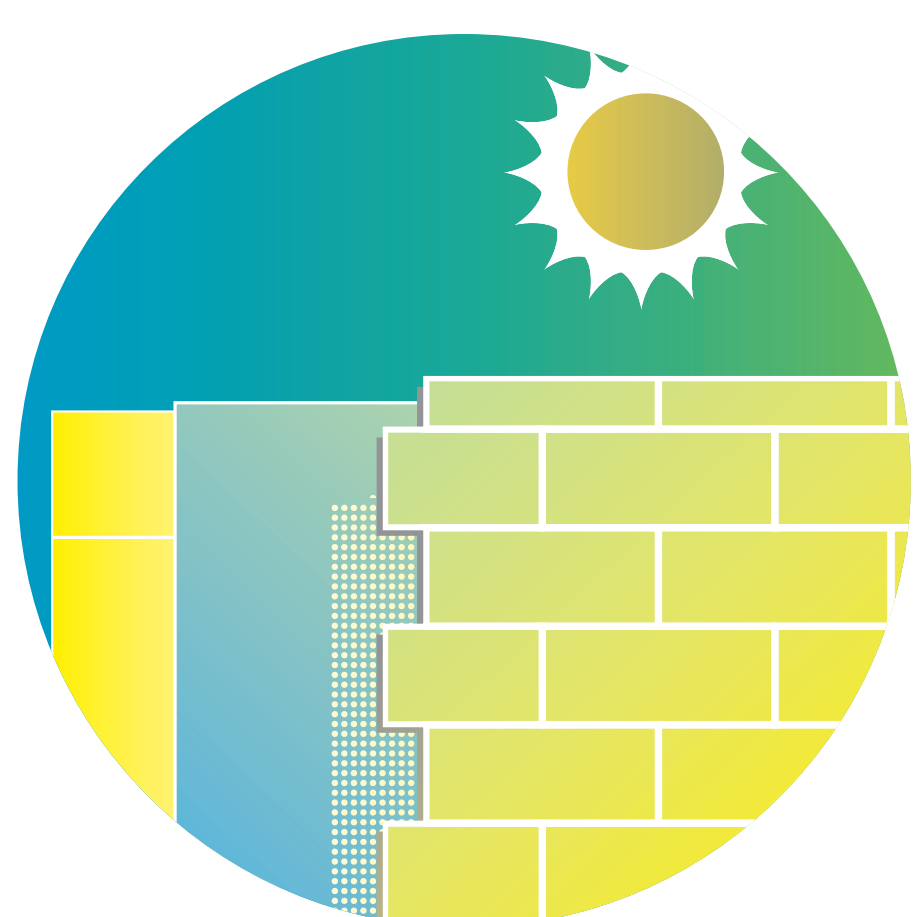
Projet cofinancé par le Fonds Européen de Développement Régional (FEDER)  
Project cofinanced by the European Regional Development Fund (ERDF)



Energy Efficiency  
in Low  
Income Housing  
in the Mediterranean



Development of integrated policies to promote energy efficiency in LIH in the Mediterranean



Large scale experimentation of technical and financial solutions in 500 dwellings to improve energy efficiency in LIH



Promotion of intelligent energy management systems at local and regional level through the experimentation of multi-energy smart meters in 110 dwellings



LEAD PARTNER (ITALY): ENEA – National Agency for New Technologies, Energy and Sustainable Economic CYPRUS: Cyprus Energy Agency FRANCE: Mediterranean Institute CSTB – Building scientific and technical centre Languedoc Roussillon Regional council GERES – Renewable energies, environment and solidarity group CRPM – Conference of peripheral maritime Regions 13 Habitat GREECE: CRES – Centre for Renewable Energy Sources and saving Region of East Macedonia and Thrace ITALY: ISNOVA – Institute for the Promotion of Technological Innovation Laore Sardegna Municipality of Frattamaggiore Municipality of Genoa MALTA: MIEMA – Malta Intelligent Energy management Agency SLOVENIA: US – Jozef Stefan Institute SPAIN: Málaga City Council Valencia Institute of Building Foundation



[www.elih-med.eu](http://www.elih-med.eu)



Projet cofinancé par le Fonds Européen de Développement Régional (FEDER)

Project cofinanced by the European Regional Development Fund (ERDF)